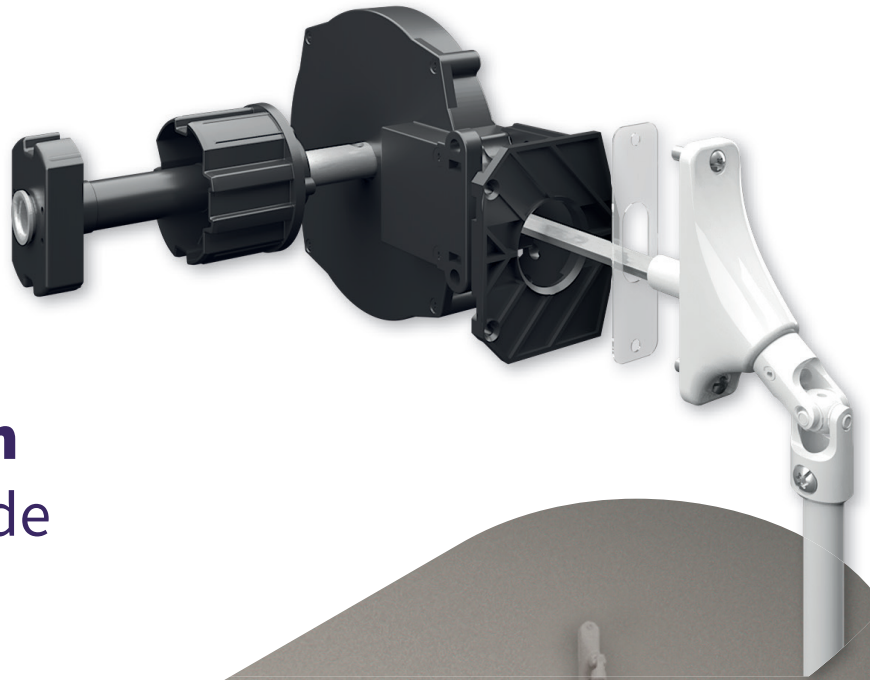




ZURFLÜH-FELLER



## Gearbox operation

ZF gearboxes provide more flexibility



**Bevel gearbox  
no. 1 b**



**Vis-frein  
gearbox**



**Gearbox with side  
exit**



**Conipact  
gearbox**



**Technivis**



**Minivis  
gearbox**



**Mini-bevel  
gearbox**

# Our gearboxes with slip clutch system: no misoperation, no breakage!



## Technivis

The Technivis gearbox was designed to be integrated into any concept (PVC boxes, integrated aluminium shutter boxes for rehabilitation, traditional boxes, etc.) and provides a slip clutch function for the lower limit switch or in the final stage of curtain locking, thus eliminating any risk of damage to the roller shutter's components and preventing any forced operation.

⊗ **Reduction ratio: 1/5.25** – ⬆ **Lifting capacity\*: 20 kg**



## Vis-frein

The Vis-frein gearbox is versatile, has a compact design and provides exceptional performance, making it suitable for any concept. It can be used in integrated shutter boxes for rehabilitation as well as in PVC, traditional or tunnel boxes. Also available in version without slip clutch.

*Also available in version without slip clutch.*

⊗ **Reduction ratio: 1/7** – ⬆ **Lifting capacity\*: 25 kg**



## Mini-bevel gearbox

Intended for integrated aluminium shutter boxes for rehabilitation and PVC boxes, the bevel gearbox includes the slip clutch function and at the same time retains the efficiency of locking components. Its spring locking system means that it can be quickly installed: simply release the spring to prevent rotation.

⊗ **Reduction ratio: 1/2.9** – ⬆ **Lifting capacity: 13 kg**

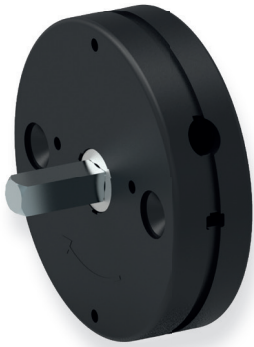


## Gearbox with side exit: for maximum window opening

The gearbox with side exit combines high performance with great ease-of-use. Due to its performance it can be mounted with large-sized roller shutters in PVC boxes for both new construction or rehabilitation. *Also available in version without slip clutch.*

⊗ **Reduction ratio: 1/7** – ⬆ **Lifting capacity\*: 24 kg**

# Our gearboxes without slip clutch:



## Minivis

Intended for integrated aluminium shutter boxes for rehabilitation and PVC boxes, the Minivis gearbox combines compact design, good performance, strength and robustness.

⊗ **Reduction ratio: 1/6.5** – ⬆ **Lifting capacity\*: 17 kg**



## Conipact: an outstanding compactness to performance ratio

Installing the Conipact gearbox is quick and easy. Its overall design make it ideal for mounting roller shutters in traditional and tunnel boxes.

⊗ **Reduction ratio 1/5.22** – ⬆ **Lifting capacity\*: 16 kg**



## Bevel gearbox

Specially made for heavy-duty shutters: being generously dimensioned, the bevel gearbox will easily lift heavy-duty and high-security roller shutters. This robust and powerful gearbox will fit in both traditional and tunnel boxes.

⊗ **Reduction ratio: 1/7.1** – ⬆ **Lifting capacity\*: 27 kg**

## 👍 Choose efficiency

Zurflüh-Feller gearboxes have been lab-tested for more than 10,000 cycles in order to meet the requirements of the French certification for closures (NF Fermetures). Even after 10 years of use they still deliver the same mechanical strength, fatigue limit and impeccable quality. All our gearbox models are available in versions with or without limit switch.

Both easy to use  
and long lasting

Endurance tests performed to meet  
the requirements of the French certification for closures

## Shutter box exits

- + *Wide range suitable for every situation*
- + *Several exit positions*
- + *Various exit angles*
- + *Various rod lengths*
- + *Variety of colours*
- + *Offset versions*

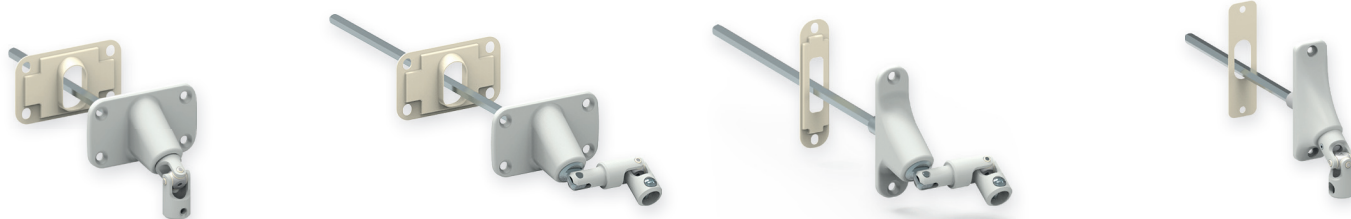
### ► Standard or offset mini cardan joint

- + Preferred area of application: PVC box
- + When the cardan joint is placed in its resting position, the crank handle can be offset from the passage of the leaf and thus enable a wider opening.



### ► Double cardan joint

- + Standard or offset version
- + Standard narrow version or wide version
- + Version with zamak, lacquered, nickel-plated or polymer frame
- + Preferred area of application: traditional tunnel box or integrated aluminium shutter box



### ► 120° angle adapter

- + Preferred area of application: tunnel box
- + Standard narrow version or wide version



## Operating handle

### Crank handle

- + Fastened with clip or stopper
- + Various rod colours and lengths available
- + Aluminium and steel versions



11 Rue des Herbiers  
25190 Noirefontaine - France  
Tel.: +33 (0)3 81 99 33 00  
Fax: +33 (0)3 81 99 33 40

[std@zurfluh-feller.com](mailto:std@zurfluh-feller.com)  
[www.zurfluh-feller.fr](http://www.zurfluh-feller.fr)